



# **SUMAS**

## **Career-related Studies®**

### **BUSINESS & SUSTAINABILITY**

CRS Strategic Provider



# Table of Contents

<b>INTRODUCTION TO SUMAS</b>	<b>3</b>
<b>SUMAS PROGRAMS</b>	<b>6</b>
<b>SUMAS CAREER-RELATED STUDIES® PROGRAM</b>	<b>10</b>
STRUCTURE OF SUMAS CrS® BUSINESS & SUSTAINABILITY	<b>11</b>
SUMAS CrS® FUNDAMENTAL COURSES	<b>12</b>
GLOBAL CLASSROOM IN LIVESTREAMING	<b>13</b>
APPLIED COMPONENT	<b>14</b>
PATHWAYS	<b>16</b>
FAST-TRACK	<b>28</b>
BACHELOR FEES	<b>29</b>
WHAT OUR PARTNER SCHOOLS SAY	<b>30</b>
WHAT OUR STUDENTS SAY	<b>35</b>
TESTIMONIAL VIDEOS	<b>41</b>
SUMAS CrS® ALUMNI UNIVERSITY DESTINATIONS	<b>44</b>
<b>CONTACT US</b>	<b>46</b>

---

# SUMAS



**Sustainability Management School (SUMAS)** is the first business school in the world to launch Bachelor and Master programs in Sustainability Management.

# SUMAS



## Sustainability Management School (SUMAS) hinges upon three pillars:

**Business operations must integrate environmental and social responsibility** into their practices to face the challenges of our global societies.

**Personal creativity has to be stimulated through critical thinking** to develop innovative ideas, especially in the field of a circular economy.

**Gender and ethnic diversity should be celebrated.** It has been widely proven that diverse teams are more effective than monolithic work patterns.

## Accreditation & Rankings

SUMAS was granted full accreditation in 2016 by ACBSP, the leading specialized accreditation association for business education, supporting, celebrating, and rewarding teaching excellence. It is the first business school and academic institution in Switzerland to achieve a QS 4 Stars Rating in teaching from QS Quacquarelli Symonds, the first international assessment of its kind.



## Lake Geneva Campus, Gland, Switzerland

Our Swiss campus is located in Gland, a short distance from Lake Geneva in Europe's most sustainable building, the Swiss Conservation Center in Gland. We share this space with prestigious international organizations such as WWF, IUCN and Ramsar that collaborate with SUMAS for projects and guest lectures.



## Milan City Campus, Italy

Our Italian campus is strategically located in the innovation and sustainability district of Milan. Thanks to our professional network, we are able to provide schools with projects in collaboration with local and international organizations. Milan is one of the most greenest cities in the world.

## Live-Streaming Campus

Live-Streaming Campus is a Distance Learning option with our Global Classroom, connecting students with weekly sessions delivered by SUMAS Professors. CrS students and Bachelor students have the opportunity to choose the Live-Streaming Program which allows flexibility to study remotely from all over the world.



CAMPUSES

# PROGRAMS



## SUMAS Career-related Studies® (CrS®)

**SUMAS CrS® Business & Sustainability** is an innovative study program for IBCP students wanting to make impact with their education.

SUMAS is a CrS® Strategic Provider to the IBCP.



## Bachelor of Business Administration (BBA) *on campus or live-streaming*

SUMAS offers **five Bachelor tracks** focused on Sustainability Management, Sustainable Fashion, Sustainable Hospitality, Sustainable Tourism and Sustainable Finance and Digital Innovation.





## Master of Arts in Management (MAM)

SUMAS offers **four majors for its online or on-campus Master of Arts in Management:** Sustainability Management, Sustainable Fashion, Sustainable Hospitality and Sustainable Tourism.

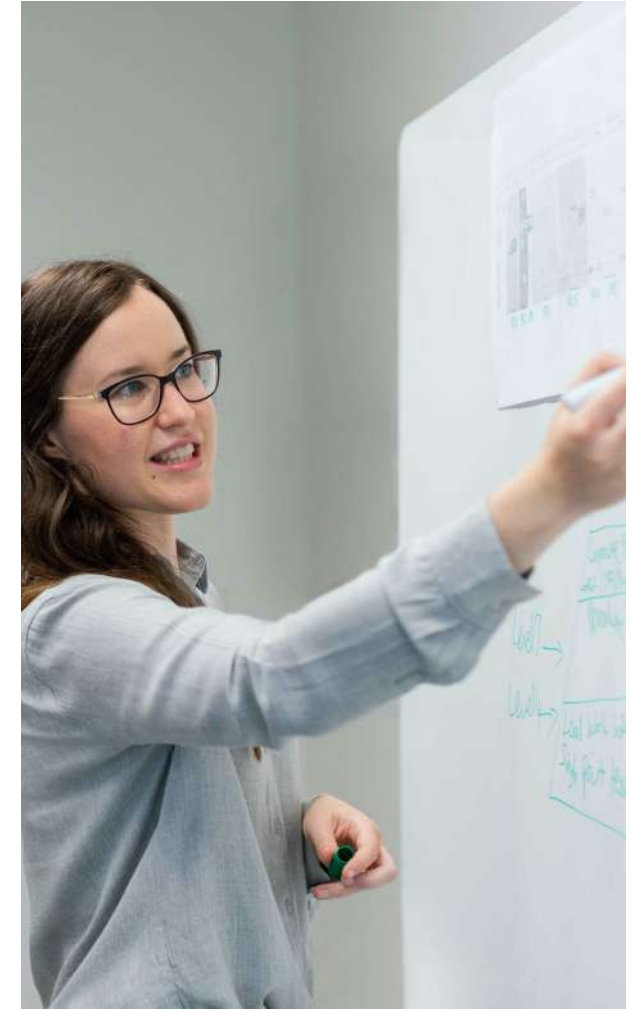
## Master of Business Administration (MBA)

SUMAS MBA students study one of **five majors for the online or on-campus program:** Sustainability Management, Sustainable Fashion, Sustainable Hospitality and Sustainable Tourism and Sustainable Finance and Digital Innovation.



## Doctorate of Business Administration (DBA)

SUMAS **Doctorate of Business Administration in Sustainability Management** is a three-year program offered on-campus and live-streaming.



## Certificate of Advanced Studies (CAS)

Online and on-campus **Certificates of Advanced Studies (CAS)** allow business professionals to upskill their knowledge across our five sustainability-focused majors in under one year.

# SUMAS CRS®

## Business & Sustainability

An exceptional Career-related Studies program to educate responsible leaders of the future.

SUMAS Career-related Studies® (CrS®) Business & Sustainability was launched in 2016.



The International Baccalaureate Career-related Programme incorporates the values of the IB into a unique, international, real-world and career-focused program that addresses the needs of students interested in career-related education.

Sustainability is becoming increasingly important within all types of organizations and societies. SUMAS CrS® Business & Sustainability are academically challenging and are designed for students who wish to pursue a career-related education in their final two years of high school, and who have a clear vision of their future career path. This program prepares students both professionally and academically by stimulating their critical thinking and creativity.



# International Baccalaureate IBCP Diploma Overview



3 Higher Levels

3 Standard Levels



2-4 IB  
Subjects

The IBCP  
Core



**SUMAS**  
Career-related Studies®  
BUSINESS & SUSTAINABILITY

240  
learning  
hours

## CrS® Fundamental Courses

- Fundamentals of Sustainability
- Sustainable Innovation
- Leadership

150  
applied  
learning  
hours

## Applied Component

- Sustainability Leadership Camp/Experience
- Project Work in one of the pathways: Nature Conservation, Sustainable Fashion, Sustainable Finance and Digitalisation, Sustainable Hospitality, Sustainable Culinary Art, Sustainable Tourism.

## Learning Outcomes:

- Discuss the environmental impact of business operations and identify the underlying activities.
- Identify various stakeholders and their contribution to issues and/or solutions.
- Distinguish responsible management practices in various business contexts.
- Demonstrate a mindset that embraces values of sustainable development.
- Effectively communicate, influence, and motivate others for responsible behaviors.

# SUMAS CrS® Program

SUMAS Career-related Studies® “Business & Sustainability” are designed for self-confident students, who have a clear idea about their career path. Students will pursue career-related education during the last two years of their high-school. This study program is relevant for all students who are interested in responsible management applicable in different fields.

The SUMAS CrS® aims to provide students with the foundational knowledge on managing sustainability and helps them develop their competencies in becoming responsible leaders.

## For Students Who Know What They Want!



# Structure of SUMAS Career-Related Studies® (CrS®) Business & Sustainability

## Curriculum Design (21 CTS)



The CrS® Business & Sustainability study plan is divided into two areas:

### A. CrS® Foundation Courses

240 guided learning hours of CrS® Courses in class (equivalent to one High Level subject within the IB program).

### B. Applied Component

150 hours of applied learning (which is equivalent to Standard Level subjects within the IB Program). This component is made up of the Sustainability Leadership Experience / Camp and a Project Experience delivered by SUMAS (online or on-campus) or by the school. Project Work in one of the pathways: Nature Conservation, Sustainable Fashion, Sustainable Finance and Digitalisation, Sustainable Hospitality, Sustainable Culinary Art, Sustainable Tourism.



# SUMAS CrS® Fundamental Courses

240 LEARNING HOURS



## Fundamentals of Sustainability

Students will acquire a solid basic understanding of the main aspects of sustainability to prepare them for the advanced courses. They will explore individual, company and societal perspectives.

- The biosphere, cycles, and ecosystems
- Climate change
- Impact of daily personal and business decisions on the environment
- Tools to quantify energy, climate and water impact
- Pollution, electronic waste and recycling
- Sustainable tourism, best practices in ecotourism and innovative travel destinations
- Applied statistics for sustainability



## Leadership

Students will be encouraged to develop and improve a range of leadership skills and methodologies through reviewing and analyzing the foremost leadership theories and how they may apply them in real-world situations.

- Contemporary issues in leadership
- Power, authority and conformity
- Group dynamics and high-performance teams
- Contingency Theories
- Effective Leadership Styles
- Cross-cultural competencies
- Change management
- Systems thinking



## Sustainable Innovation

This course integrates real cases in material/product innovation and introduces circular economy principles and eco design. The individual, company and societal perspectives are explored in relation to this theme.

- Circular economy
- Performance economy
- Life-cycle analysis
- Ecodesign for sustainable products
- Material health and material reutilization
- Supply to value chain Management
- Sustainable innovation strategies in various industries

# Global Classroom in Livestreaming

## Distance Learning with Livestreaming sessions in a global classroom by SUMAS

Students will be connected with other students across the Globe through communication tools on the E-learning Platform where they will be able to brainstorm, exchange information, present their work-in-progress, share and discuss questions relevant to the CrS® Program and learning outcome objectives.



# Applied Component

150 APPLIED LEARNING HOURS

## Phase 1: Sustainability Leadership Camp

The Sustainability Leadership Camp is designed to introduce the concepts, styles and practices of leadership through role-playing and outdoor activities or team building games.

Schools have two options for the Sustainability Leadership Camp:

1. They can choose a 5-day camp in either the Lake Geneva area or Milan.
2. They can opt for a 10-day camp split equally between both locations.

Additionally, the camp can also be set up as a livestreaming experience





## Phase 2: Project Experience

Project Experience involves the application of theoretical knowledge to concrete projects. Students choose one of the pathways:



**Sustainable Fashion**



**Sustainable Hospitality**



**Sustainable Culinary Art**



**Sustainable Finance  
and Digitalization**



**Nature Conservation**



**Sustainable Tourism**



*"The main part of the SUMAS Career-related Studies Program that I found enjoyable was the formatting of live streaming sessions and online activities. It allowed me to work at a pace that I found most effective and still make sure that everyone is able to ask questions to both the teacher and each other. Though an interactive aspect of our learning experience, we were also able to put our knowledge into practice."*

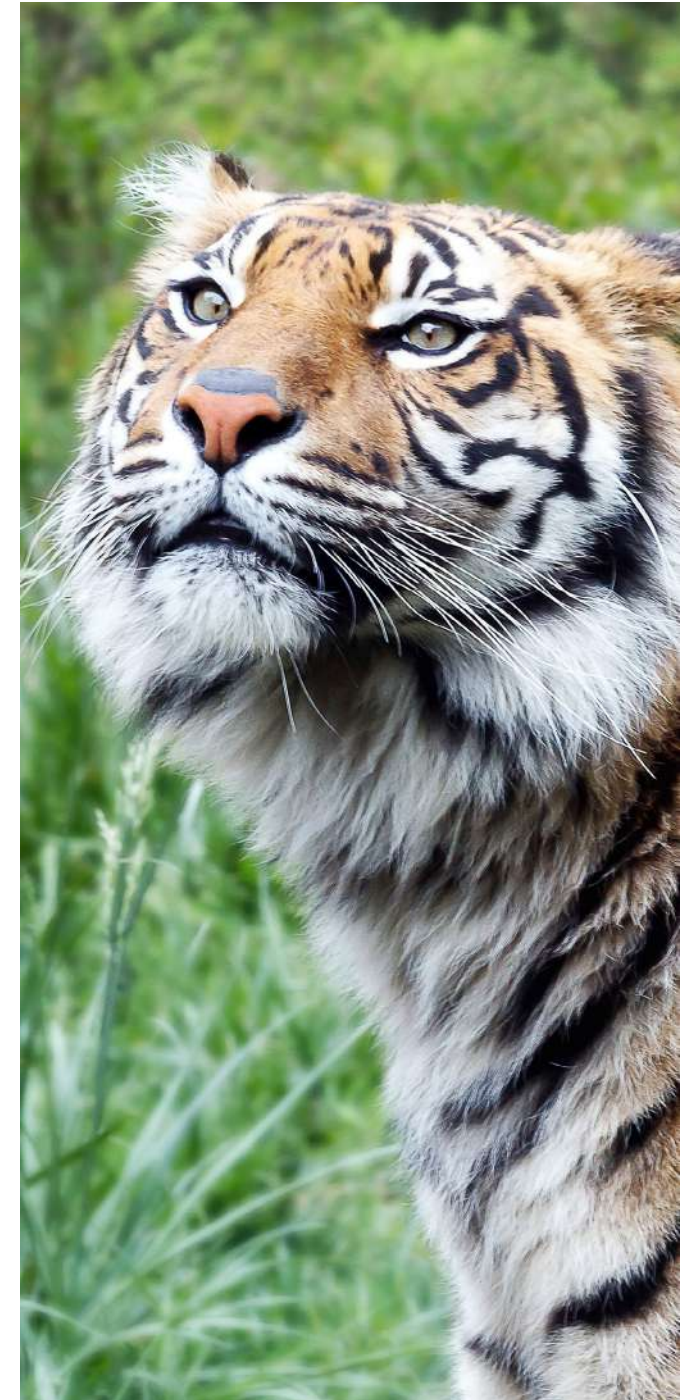
Dalia Joy Hazzaa  
Fairgreen International School  
Dubai, 2023



## Pathway Focuses

- **Fundamental concepts and policies of natural resource conservation**
- **Values for the conservation of nature**
- **Outdoor activities**

Nature Conservation involves the practice of effective management techniques.. SUMAS is based in the Swiss Conservation Center, where researchers in inter-governmental organizations, such as IUCN, WWF and RAMSAR develop environmental policies on an international level. Students will learn fundamental values for the conservation of biological diversity, specifically biodiversity loss, freshwater depletion, and climate change. Students will engage in outdoor activities to learn about conservation matters in an experiential setting.







## Bioparc & Biodiversity

Bioparc is based in Geneva, Switzerland. It is at the forefront of real-world nature conservation. Students learn how to take action to preserve more than 250 animals of around 85 different species. The aim is to raise awareness on biodiversity challenges through research and analysis of the nature conservation initiatives of the managers of the Bioparc.



## Ramsar & IUCN: nature-based solutions



Ramsar is the Convention on Wetlands - an intergovernmental treaty that provides the framework for the conservation and wise use of wetlands and their resources. Students analyse different wetland sites, including threats and opportunities within and outside the protected area. As part of this work, IUCN experts share with our students' guidelines on nature-based solutions to protect, sustainably manage and restore natural and modified ecosystems.



## Pathway Focuses

- **Ethical issues in fashion consumerism**
- **Sustainable fashion management systems**
- **Creative focus on innovative fashion concepts and applications**
- **New sustainable fashion design practices**

Sustainable fashion provides cutting-edge knowledge about the core issues and challenges of the global fashion industry. Students will learn the art of sustainable fashion with a creative focus and a critical awareness that enable them to become responsible leaders in the industry. Students will be engaged in hands-on projects guided by academics, consultants and professionals. This track covers the topic of Sustainable Fashion, from design, material sourcing, fabric treatment, operations, and production to green marketing.





## Orange Fiber, innovative materials, and circular design by Enrica Arena, CEO at Orange Fiber

Orange Fiber is an Italian company that has patented and produced sustainable fabrics from the peel of oranges to create high-quality fabrics for the fashion-luxury sector. Students learn about a fully traceable and transparent supply chain to transform this by-product into the perfect ingredient for conscious designers and explore the innovative materials and circular design in action.



## PANERAI

### Integration of Circular Economy into Panerai Business Model to Encounter Generation Z's Needs



Panerai managers are the change-makers in the world of luxury watches. Students explore how to integrate circular economy principles into Panerai's business model to meet the needs of Gen Z. The main focus of the students is on crafting value propositions that address customers' problems, best practices in the field, and they conduct up-to-date research to assess the preferences and desires of Generation Z.



## Pathway Focuses

- **Greening of Finance**
- **Digital Innovation**
- **Sustainable Investments**

International challenges such as climate change are transforming the global investment landscape. Students will learn the crucial role of finance to address sustainable challenges and explore both the investment portfolio toward climate-friendly assets and the transition to a green economy. Thus, students will engage in practical applications of blockchain technologies.

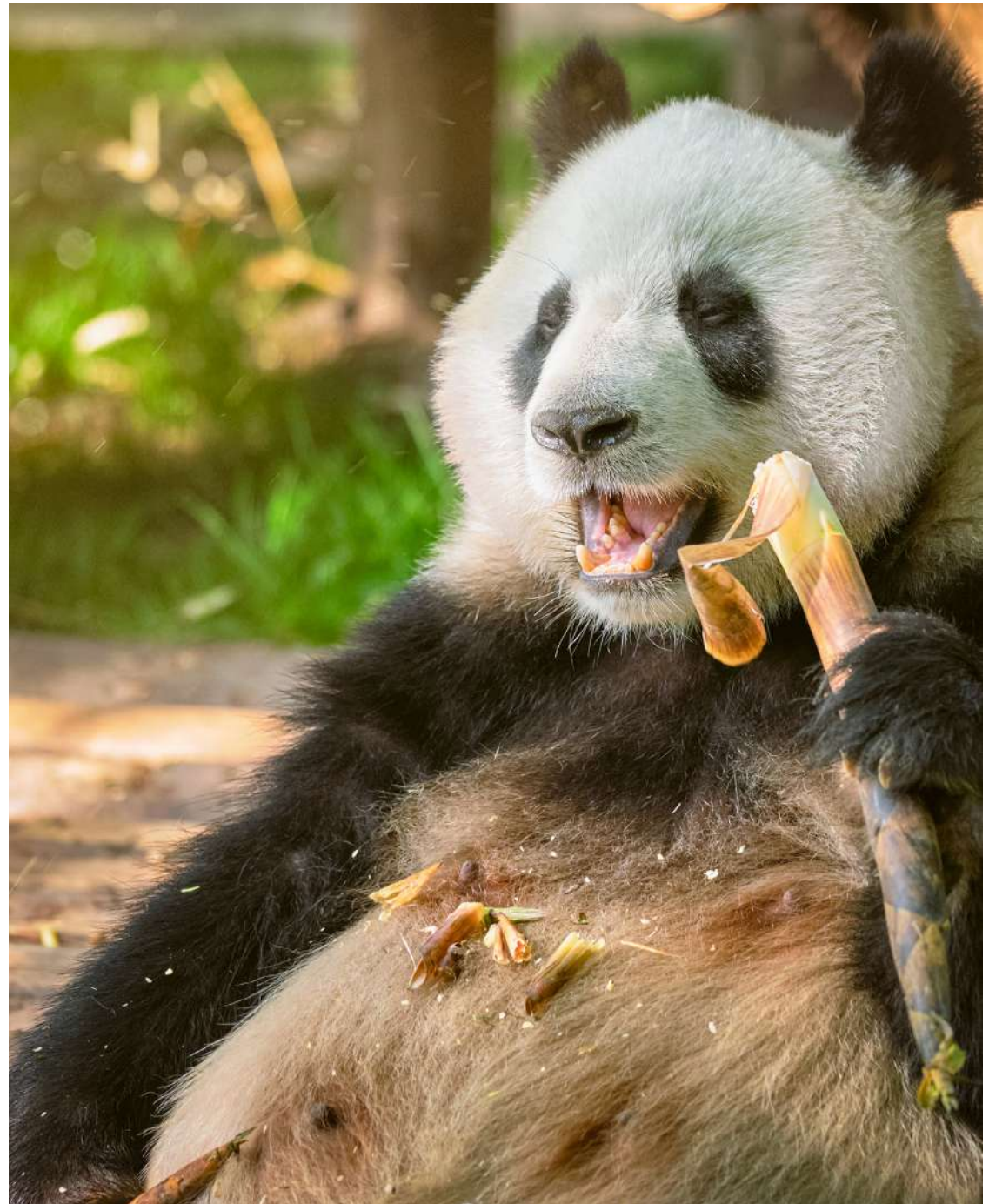






## WWF and Sustainable Investment for Younger Generation

The younger generation of investors believe that their investment decisions can help to make an impact in sustainable development and for the benefit of society. During this project, SUMAS students identify the demographics of this younger generation and what drives their investment decisions. Specifically, they analyse how future generations are put actions into their beliefs in the various roles they can take. Under the careful guidance and coordination of SUMAS professors and field experts, students propose practical ideas to mobilize the younger generation to further engage in sustainable investing.





## Pathway Focuses

- **Sustainable guest experience**
- **Technological green solution in hotels**
- **Leadership and intercultural skills**

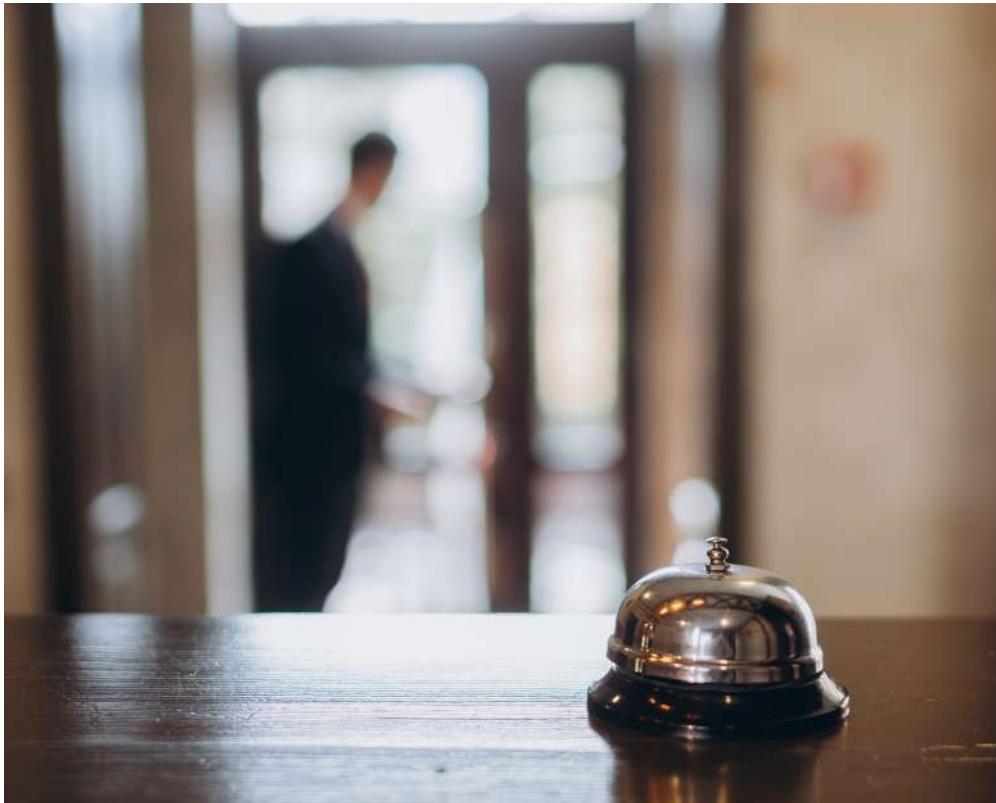
Hospitality is one of the world's fastest growing industries. There is a shift from the traditional travelers to conscientious guests in the hospitality sector. This track provides students with innovative theories in the field of sustainable hospitality to understand how to lead projects for a responsible guest experience. Real-world examples will shed light on energy, water and waste management issues and explore green solutions.





## Sustainable Hospitality Project with Shangri-la Hotel Chiang Mai, Thailand

Students collaborate with the top management of Shangri-La Hotel to develop business recommendations that drive sustainability across key aspects of responsible hotel management, such as waste management, utility management (energy and water), green marketing, environmental green systems and procurement. It is indeed an holistic approach of balancing economic advantages, social inclusion, and environmental protection.



## Sustainable Hospitality in the areas of waste management, green marketing, sustainable F&B, sustainable finance



Dusit Thani is situated on Mudhdhoo Island in Baa Atoll – Maldives' first and only UNESCO World Biosphere Reserve. SUMAS has three generations of alumni working as CSR managers at Dusit Thani Maldives. Students practice sustainability consulting activities to manage the resort's sustainability level on both operational and strategic sides. Students work in waste management, green marketing, sustainable F&B, and Sustainable Finance.



## Pathway Focuses

- **From farm to fork**
- **Sustainable practices in food and beverage management**
- **Zero-waste gastronomy**

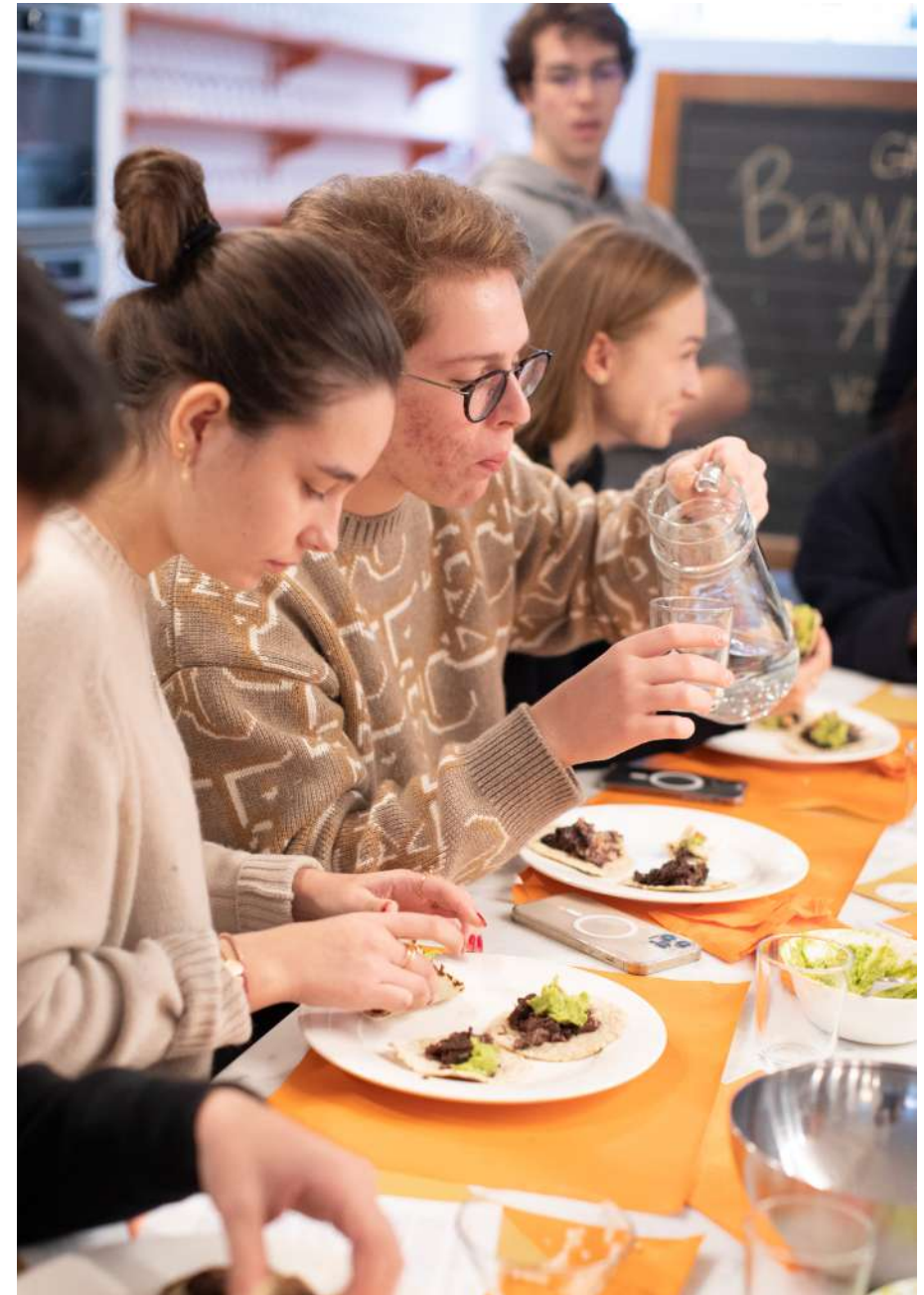
“Healthy people, healthy societies, healthy planet” is the buzz sentence of responsible chefs. Students will recognize the benefits of responsible cooking, from food sourcing methods, cooking techniques, waste management to intercultural food experiences. Students will learn tools and techniques helping to meet environmental, social and economic objectives.





## Sustainable Culinary Art at Dusit Thani

Students develop a holistic understanding of Sustainable Culinary Art based on a real context project in collaboration with Dusit Thani Maldives. Students delve into competition analysis of Sustainable Culinary Art Best Practices in Luxury Resorts and benchmarking in Maldives as well as other island destinations on a global scale. This analysis includes green procurement and purchasing strategies, environmental impact assessment, certification and eco-labels, menu marketing and presentation, sustainable revenue-generating guest activities, networks and community engagement, as well as a marketing and sales plan to attract and retain customers.





## Pathway Focuses

- **Best practices in Eco-tourism**
- **Impact of tourism on the local communities**
- **Protected Areas and Recreation Management**

Protected areas are intrinsically connected to the concept of biodiversity conservation and eco-tourism. Students will be trained to understand concepts of sustainable tourism development, parks and recreation management, and best practices for responsible visitors. This track also explores how local communities can benefit from the sustainable management of touristic areas in the long term.



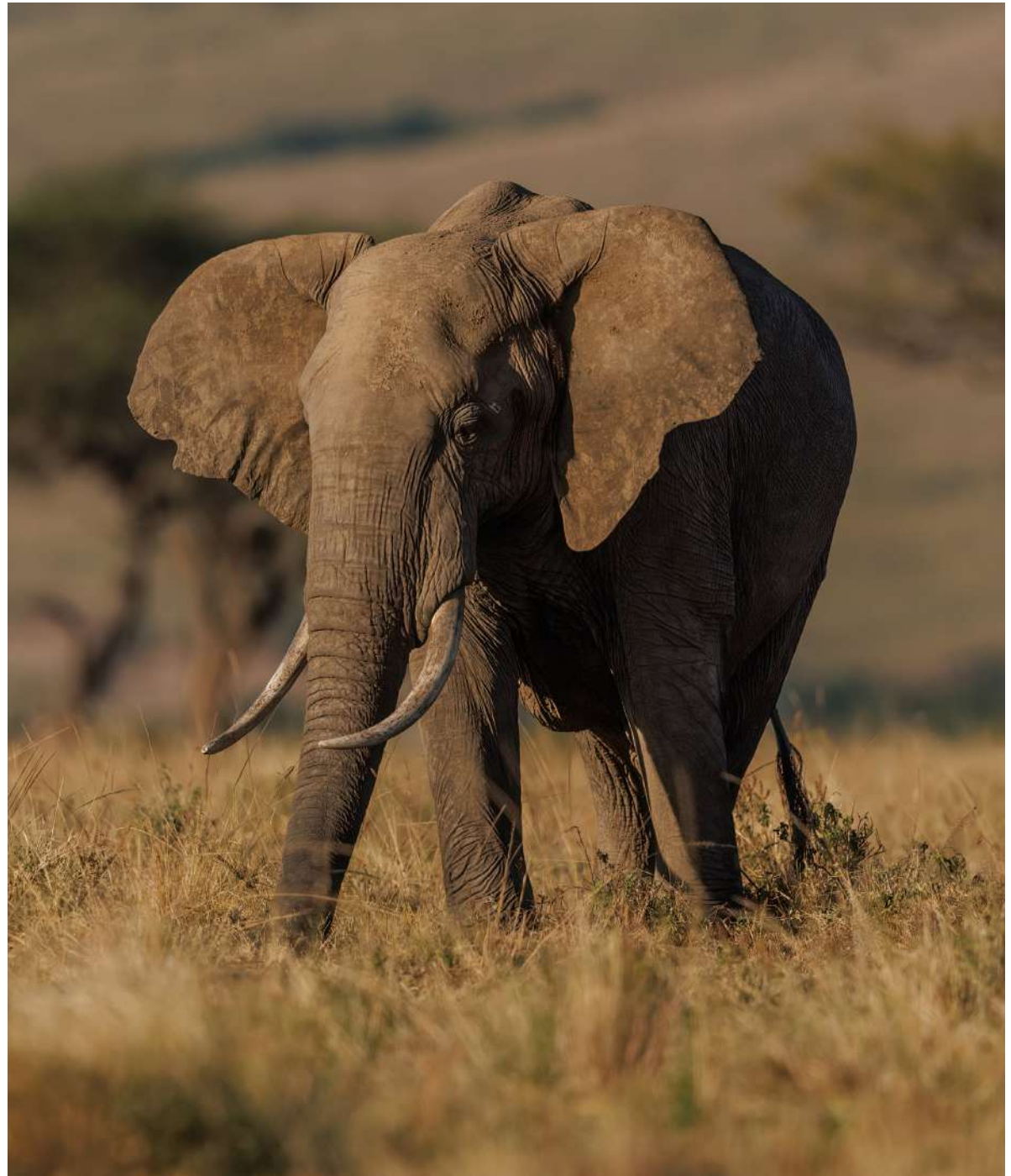




## African Wildlife Foundation (AWF) and Green Growth implications for sustainable tourism

African Wildlife Foundation (AWF) has built a collective business model and sustainability-related projects with high ROI potential for the local communities (SACOLA Community) of Volcanoes National Park, Rwanda. The aim of the project is to raise awareness on the Green Growth paradigm and its implications for sustainable tourism.

Students assess current risks and propose a plan to create both value from wildlife, and revenues for conservation.





# Fast-Track

## YOUR BACHELOR DEGREE IN JUST 5 SEMESTERS

**Upon successful completion of the SUMAS CrS program, you'll receive 21 US academic credits, propelling you towards your bachelor degree at SUMAS in just 5 semesters.**

**Don't miss this incredible opportunity to fast-track your education and reach your academic goals with us! Enroll now and leap ahead in your studies.**



# Bachelor Fees

Accelerate your academic journey - Direct Entry into SUMAS Bachelor Programs!

<b>CAMPUS</b> Study in multiple campuses • Lake Geneva • Milan City • Livestreaming	Year 1		Year 2		Year 3	
	Semester 1	Semester 2	Semester 3	Semester 4	Semester 5	Semester 6 (waived)
	€ 9'400	€ 9'400	€ 9'400	€ 9'400	€ 9'400	21 US credits transferred from CrS program
Expenses & Materials	€ 250	€ 250	€ 250	€ 250	€ 250	/

# What our partner schools say



**COLLÈGE DU LÉMAN**

International School · Geneva

**Collège du Léman, Geneva  
Switzerland**

SUMAS CrS® PARTNER SINCE 2016



“The CP is an ambitious and innovative programme which provides a different pathway for students by incorporating academic rigor, career studies and soft skills. The course plays to the students’ academic strengths because there is a flexibility in the DP subjects which can be chosen, allowing students to choose those at which they excel.

An integral part of the programme is enabling students to engage in career-related learning. All of the Career-related Studies® at Collège du Léman use SUMAS as the external provider and all fall under the umbrella of “Business & Sustainability”, a mindset which should be central to any future career.

The soft skills focus provides the students with the skills which are important to work, study and how best to live their lives.

To prepare students to succeed in a rapidly changing world, schools must not only equip them with the necessary skills and learning opportunities but also the ability to manage and influence change.”

**Sheena Thandy**, IBCP Coordinator

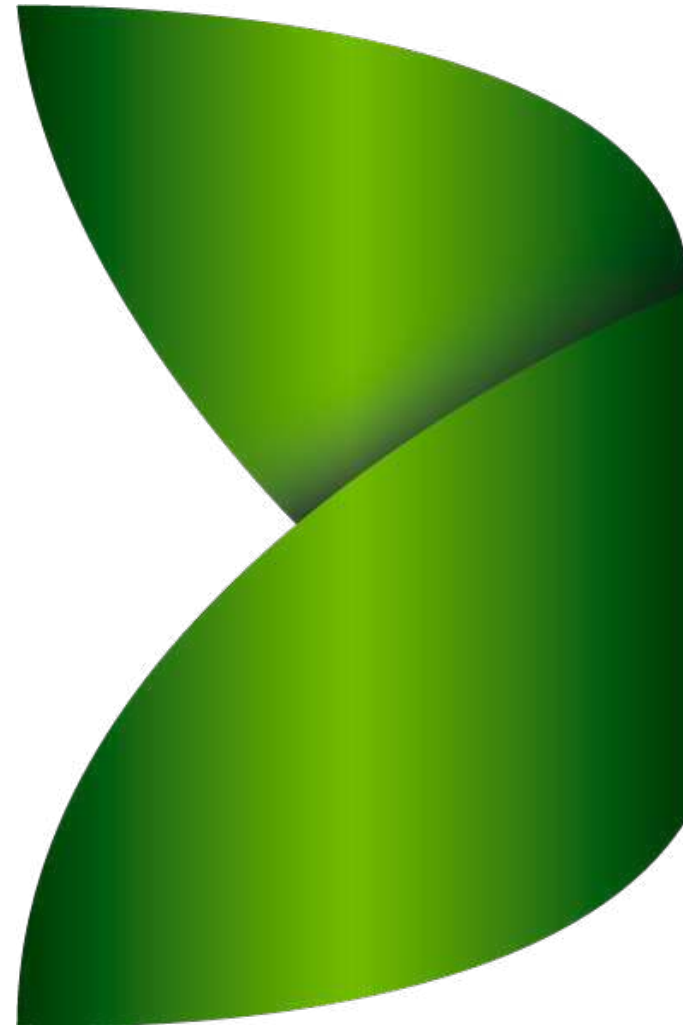




"What I really like about the SUMAS CrS is the access to the very latest case studies and research that SUMAS as a world leader in Sustainability Management education can provide. It is great for my students to feel they are part of a network of people working and learning at the cutting edge of Sustainability".

**Nathan Hunt**

IB Career-related Programme Coordinator



## Renaissance College, Hong Kong

SUMAS CrS® PARTNER SINCE 2019

“SUMAS CrS® program offers so much more than just business management. It emphasises a forward way of thinking, operating and governing business, for the ultimate sustainable business model that every organisation, company and business entity should follow and adopt. The course challenges students to think about the notion of sustainability and the achievement of a balance between economic progress, ecological equilibrium and social equity. Another strength of the programme is the flexibility and adaptability offered by SUMAS: students feel supported, listened to and challenged to bring out the best of their potential and capability.”

**Wilma Shen**, IBCP Coordinator



Renaissance  
College

Hong Kong

啓新書院



**PREM**  
TINSULANONDA  
INTERNATIONAL SCHOOL



**Prem Tinsulanonda  
International School, Chiang  
Mai, Thailand**

SUMAS CrS® PARTNER SINCE 2019

“It has been a privilege to teach the SUMAS CrS® Business & Sustainability course over the last two years at Prem. As a business teacher, I have enjoyed exploring the innovative nature of this course with my students. The practical application is what sets it apart: giving our students real life business exposure in the Shangri-la Hotel was an unforgettable experience. Essential skills, required for the workplace, are developed and honed for each student through a balanced range of activities and assessments. I found SUMAS staff to be highly professional and responsive.”

**Lisa McSweeney**, IBCP Coordinator



## Western International School of Shanghai

SUMAS CrS® PARTNER SINCE 2019



Western International School of Shanghai  
上海西华外籍人员子女学校

“As the IBCP Coordinator at WISS, I have witnessed firsthand how the SUMAS CrS® program empowers our students to become responsible global citizens and future leaders. It equips them with the knowledge, skills, and ethical mindset required to address the pressing challenges our planet faces today. Through engaging coursework, experiential learning opportunities, and meaningful industry collaborations, our students develop a deep understanding of sustainability principles and acquire the tools necessary to implement them in real-world settings.

One of the key strengths of the program lies in SUMAS’ commitment to flexibility and adaptability. Our students not only receive a comprehensive education in sustainable business practices, but they also benefit from a supportive and inclusive learning environment. SUMAS values the individuality and potential of each student, providing them with the necessary guidance and encouragement to unlock their true capabilities.”

**Gary Halcrow**, CP Coordinator



## Chadwick International School, South Korea

SUMAS CrS® PARTNER SINCE 2020



“The SUMAS CrS® courses that students at Chadwick International have undertaken are well designed and delivered. Additionally, the students have reported back to me how much they feel challenged and have enjoyed the courses thus far. As a CP Coordinator, I have felt very connected to the staff at SUMAS through frequent communication and dialogue. The mix of synchronous and asynchronous lessons has been very useful for the students. Overall, the students and I have felt very supported by the SUMAS staff and instructors. We look forward to a long and fruitful relationship with SUMAS for many years to come!”

**Jason Reagin**, IBCP Coordinator

## Haut-Lac, Switzerland

SUMAS CrS® PARTNER SINCE 2020

“SUMAS is an ideal CrS for CP students who wish to be well rounded and on track with sustainable management, that is going to impact all future careers”

Béatrice Gillet, IBCP Coordinator



## Fairgreen International School, Dubai

SUMAS CrS® PARTNER SINCE 2021



“Fairgreen International School is fortunate to be partnered with SUMAS CRS. SUMAS staff are knowledgeable, professional, accommodating and friendly.”

Fairgreen students and teachers enjoy working with the SUMAS team, they have helped to elevate the quality and marketability of our CP program.”

Mary Catherine (Katie) Williams,  
IBCP Coordinator



# What our students say



"I enjoyed the diversity of the school and the different topics at hand to learn. The teachers were very enthusiastic and welcoming which created a great sense of unity."

**Harry Pryke**  
SUMAS IBCP Alumnus



"The things that we learn are not what we would usually learn in school. Sustainability is going to be a big part of the future and people have to know what they can do to help out. Without it, the world is not going to progress and keep on going forward"

**Enzo de Santis**  
SUMAS IBCP Alumnus



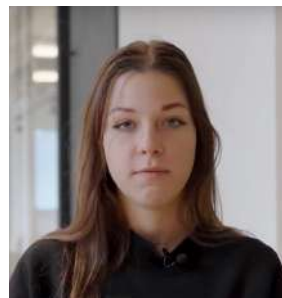
"I was overwhelmed by the welcoming and caring environment that we had the privilege of experiencing with SUMAS faculty and students."

**Ryan Domenjaz**  
SUMAS IBCP Alumnus



"From this programme I learn more on what is happening around me and how I can make a difference. Sustainability is important because it is a really interesting topic, it is something that is currently happening and has a very big impact."

**Laura Araya Lopez**  
SUMAS IBCP Alumna



“In this program, we meet many people who are already in such businesses as hospitality and fashion. It is exciting to meet and talk to these people because they have experienced what I will do in the future. They already know and can share little secrets about the industry they are a part of.”

**Ekaterina Balabina**  
SUMAS IBCP Student



“I chose Career-related Studies in Business and Sustainability because business is very important in my life in the future, and sustainability is the future of business. There is a huge opportunity in the future where business could be more sustainable and innovative. In contrast to traditional way of doing business, sustainability becomes the future of the world.”

**Taiyuan Zhang (Tony)**  
SUMAS IBCP Student



“SUMAS Career-related Studies program is very interesting and valuable to me because we study by doing a lot of different activities and field visits in sustainable hospitality, sustainable fashion and nature conservation. It is a very creative way to study and learn. We discover new stuff while we are doing these practical activities.”

**Ying Ying Lam**  
SUMAS IBCP Student



“SUMAS Program is flexible and creative. We do many projects and learn in a different way, which is better to remember. We can work as a team, practice the skills and learn from each other to develop new skills in the future.”

**Bianka Zembova**  
SUMAS IBCP Student



“Before taking the SUMAS CrS course in Business and Sustainability, I never thought about sustainability and its importance. After coming here, I understood its significance and value for business. From now on, I will try my best to be as sustainable as possible and influence people who will be around me. With the gained knowledge, I can ensure that every business I open is sustainable.”

**Amirhossein Narjafi**  
SUMAS IBCP Student





## PREM INTERNATIONAL SCHOOL – THAILAND



“The IBCP SUMAS Programme is intense, but I would recommend it to anyone whose passions lie between leadership and learning about real life business challenges. The course works into different angles, including personal growth and development. I really enjoyed that the learning outcomes of the course can be applied to different industries.”

**Arthip Sukthon (Fin Taylor)**  
IBCP IBCP Student



“I really enjoyed the practical approach of the SUMAS IBCP program, as it gave students the opportunity to grow as professionals.”

**Vuttipat (Ben) Srinuan**  
SUMAS IBCP Student



“Before joining SUMAS CrS Programme, I wasn’t aware of the importance of sustainability and environmental issues. I have enjoyed the variety of practical activities and experiences, compared to my DP subjects. My most successful outcome is what I have learned about myself as a leader, leadership in general and its importance for future careers.”

**Imnalema (Alem) Jamir**  
SUMAS IBCP Student



“Thanks to SUMAS I learnt a lot about team working. I could understand my strengths in a team setting and how teammates complement one another. Also, SUMAS online platform is very functional and helpful, I used it as my main source for information”

**Thananya (Tanya) Hamblin**  
SUMAS IBCP Student



“SUMAS Programme has a strong focus on business and sustainability. It helped me to develop essential leadership skills such as team communication and public speaking”

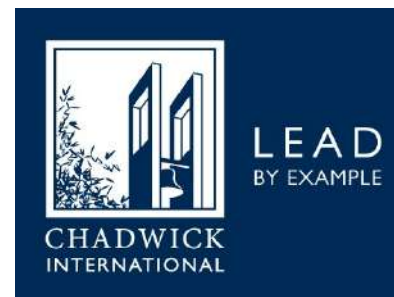
**Benjamin Prasarttongosoth**  
SUMAS IBCP Student



## RENAISSANCE COLLEGE HONG KONG

"My most favoured part of the SUMAS CRs is the interactive sessions with other students and professors around the world; a global classroom that allows for diverse learning that opposes the traditional teaching standard." Jessica Clement SUMAS IBCP Student

**Jessica Clement**  
SUMAS IBCP Student



## CHADWICK INTERNATIONAL KOREA

"The best part of learning with SUMAS was the cooperative works that were done with my teammate during the eco-club and learning things that I have overlooked before, with professors."

**Minkyu Robin Kim**  
SUMAS IBCP Student







haut+lac

école internationale bilingue  
international bilingual school

HAUT-LAC  
SWITZERLAND

“The SUMAS team is very inclusive, open minded and kind-hearted. I took the choice to study with SUMAS as it allowed me to learn about the world today in more depth, to learn the consequences and how we humans can fix it. It made me aware and allowed me to change my everyday habits as well as educate my peers and friends around me to be more sustainable and understand sustainability in more depth. I’ve learnt a lot as well on how to be a good leader and what makes a good leader, it has helped me communicate better with people in general. Thanks to this program I have grown as a person and I recommend students to take this path as well because of all the opportunities.”

**Julia Vincentini**  
SUMAS IBCP Student



AUSTRALIAN  
INTERNATIONAL SCHOOL  
— PHNOM PENH —

AUSTRALIAN  
INTERNATIONAL  
SCHOOL  
PHNOM PENH  
CAMBODIA

“I chose SUMAS’ Career-related Studies program with a clear vision of my future in the hospitality industry. This experience opened my eyes to various aspects of hospitality and sustainability. Working as a Sustainability Business Consultant for Dusit Thani Maldives was an exhilarating journey, collaborating with peers from around the world. Our mission was to make the resort more sustainable, and I focused on the Sustainable Culinary Art area, proposing an aquaponics system. This project taught me how to work with international businesses and enhanced my professionalism as a high-school student. Each project with SUMAS was exciting and allowed me to explore my ideas fully, making it the best experience with incredible support from the SUMAS team.”

**Dalia Joy Hazzaa**  
SUMAS IBCP Student





DISCOVERY  
COLLEGE

DISCOVERY COLLEGE, ESF  
HONG KONG

"I decided to study at SUMAS because of its Sustainable Fashion Pathway. Studying at SUMAS helped me to expand my knowledge on the current issues in fashion industry and allowed me to become a responsible leader. The program is very hands-on, specialized to my interest in sustainable fashion and thought-provoking."

**Jemma Chalisa Armstrong**  
SUMAS IBCP Student



FAIRGREEN INTERNATIONAL SCHOOL  
DUBAI

"The program helped me to learn about sustainable business and sustainable fashion, and work on vital skills that I will be utilizing in the future. The main part of the SUMAS Career-related Studies Program that I found enjoyable was the formatting of live streaming sessions and online activities. It allowed me to work at a pace that I found most effective and still make sure that everyone is able to ask questions to both the teacher and each other. Though an interactive aspect of our learning experience, we were also able to put our knowledge into practice."

**Dalia Joy Hazzaa**  
SUMAS IBCP Student





# Testimonial Videos

CLICK ON THE IMAGES TO WATCH THE VIDEOS









# SUMAS CrS® Alumni University Destinations

## Canada

Simon Fraser University  
University of Toronto  
University of Victoria

## China

Liverpool University

## France

Brassart Art College

## Italy

Istituto Marangoni  
John Cabot University  
Sustainability Management School - Milan  
Università Bocconi

## Netherlands

Fontys University of Applied Science  
University of Amsterdam

## New Zealand

University of Canterbury

## Scotland

Heriot Watt University

## Spain

European University of Madrid

## Switzerland

Ecole Hôtelière de Lausanne  
Les Roches Hospitality School  
Sustainability Management School - Geneva

## Thailand

Chulalongkorn University  
Thammasat University



# SUMAS CrS® Alumni University Destinations

## United Kingdom

Brighton University  
Bristol University  
Brunel University London  
Canterbury Christ Church University  
Durham University  
Essex University  
Hult International Business School  
King's College London  
Lancaster University  
Leeds Beckett University  
Loughborough University  
Newcastle University  
Oxford Brookes University  
Queen Mary University  
Richmond University  
Solent University Southampton  
St Mary's University  
The American International University in London  
University of Brighton  
University of Kent  
University of Leeds  
University of Plymouth

## United Kingdom

University of Salford  
University of Stirling  
University of Sussex

## United States

Arizona State University  
Berklee College of Music  
BIMM Institute  
George Washington University  
Hawaii Pacific University  
Loyola Marymount University  
LIM College  
Liverpool University  
Marist College  
Pace University  
Pennsylvania State University  
Santa Monica College  
University of California-Riverside  
University of Connecticut  
University of La Verne

# Contact Us

## Swiss Campus

Headquarters – Rue Mauverney 28  
SUMAS Learning Center – Route de Suisse 35  
1196 Gland, Switzerland

## Italian Campus

Via Tortona 56  
BASE Reception – Via Bergognone 34  
20144 Milan, Italy

+41 22 919 1099  
+39 342 802 0203  
[crs@sumas.ch](mailto:crs@sumas.ch)  
[www.sumas.ch](http://www.sumas.ch)

